

BaracodaPencil2 Programming Guide



Important notice

Every effort is made to ensure the accuracy of our product information; however, we accept no responsibility for errors or omissions including, but not limited to, the implied warranties of merchantability and fitness for a particular purpose. We shall not be liable for errors contained herein or for incidental consequential damages in connection with the furnishing, performance, or use of this material.

Specifications or version may be subject to change without notice. The actual specification and version are based on the product delivered.

Introduction

Scanning a series of programming barcode labels can configure the scanner.

The scanner must be properly powered before programming. The scanner will acknowledge a good and valid programming barcode label reading with two beeps and a green enlightening. It will give two other beeps (lower tone) and a red enlightening for either an invalid or bad reading. Please do not read the programming barcodes while being connected to the BaracodaManager.

PROGRAMMING OPTIONS:

Programmable options are divided into 2 groups. The first groups includes the options that show the general behaviour of the scanner. The second group sets the decoding parameters for each barcode symbology.

BaracodaPencil 2 Programming Guide

1/ INTRODUCTION	3
2/ GENERAL CONFIGURATION.....	4
2.1/ Reset all parameters:	4
2.2/ Erase all barcodes in memory	4
2.3/ Baracoda advanced features	4
2.3.1/ Switch on delay	4
2.3.2/ Shutdown timers	5
2.3.3/ No data loss mode and Baracoda Header	5
2.3.4/ Timestamp Option.....	6
2.4/ Reading Mode	7
2.5/ Operating Mode	8
2.5.1/ Real time mode	8
2.5.2/ Batch mode	9
2.6/ Buzzer and Led Settings	10
2.7/ Bluetooth commands	11
2.7.1/ Bluetooth name	11
2.7.2/ Sniff settings	12
2.7.3/ Power emission settings	12
2.7.4/ Security (code PIN) settings	12
2.8/ Prefix and suffix.....	13
2.8.1/ Prefix/suffix.....	13
2.8.2/ Postrefix/postsuffix	14
3/ DECODER SETTINGS	15
3.1/ Symbology default settings	15
3.2/ Symbology Identifier	15
3.3/ Disable All Symbologies	15
3.4/ Set decoder barcode length.....	16
3.5/ Codabar settings	16
3.6/ Code 11 Settings	17
3.7/ Code 39 settings.....	17
3.8/ Code 93 Settings	18
3.9/ Code 128 Settings.....	19
3.9.1/ General	19
3.9.2/ EAN 128: Group Separator.....	19
3.10/ Interleaved 2 of 5 Settings	20
3.11/ MSI Code Settings	20
3.12/ Standard 2 of 5 Settings.....	21
3.13/ UPC/ EAN Settings	21
3.14/ Set min or Max length option.....	23
APPENDIX 1: ASCII Table (A-Z, a-z, 0-9, ponctuation, Control characters)	25
APPENDIX 2	29

1/ Introduction

The BaracodaPencil 2 can be programmed by scanning barcode labels which contain commands for the 1D decoder.

Programming labels must be Code128, with specific starting and ending characters. These labels will always be read, even if Code128 symbology is disabled.

The scanner will acknowledge a good and valid programming bar code label reading with two beeps and a green enlightening led. It will give two other beeps (lower tone) and a red enlightening led for either an invalid or bad reading.

Please do not read the programming barcodes while being connected to the BaracodaManager.

Programmable options are divided into 2 groups. The first group includes the options that show the general behaviour of the scanner. The second group sets the decoding parameters for each barcode symbology.

2/ General Configuration

2.1/ Reset all parameters:

The reading of the "Default settings" label turns all the parameters of the BaracodaPencil2 back to default settings and switches it off.



2.2/ Erase all barcodes in memory

The BaracodaPencil2 has the ability to store barcodes in its internal memory (both in batch mode and in Real Time with "No Data Loss Mode" ON). By reading the following barcode you will empty the internal memory of the scanner.



2.3/ Baracoda advanced features

2.3.1/ Switch on delay

In order to switch on the BaracodaPencil2 in its standard mode, you should just press the trigger. You can set up the scanner to be switched on only after keeping the trigger pressed for two seconds by reading the appropriate barcode.



2.3.2/ Shutdown timers

There are two different 'shutdown timers' :

- **when connected timer** : delay between the last scanned barcode and the switch off when the scanner is connected to a host
- **Not connected timer** : delay between the last scanned barcode and the switch off when the scanner is not connected to any host

It is possible to set those timers to 'infinite'. In that case, the scanner will stay all the time ON.



By default, timers value are :

- when connected timer = 20 minutes
- Not connected timer = 10 minutes



2.3.3/ No data loss mode and Baracoda Header

Baracoda header:

It is a proprietary data encapsulation. It is necessary to activate it to use the Baracoda keyboard emulation (Kemul) and Hyper terminal.

The Baracoda header is enabled in default settings

No data loss mode:

Baracoda has developed a proprietary communication protocol in order to enhance the security of the Bluetooth transmission.

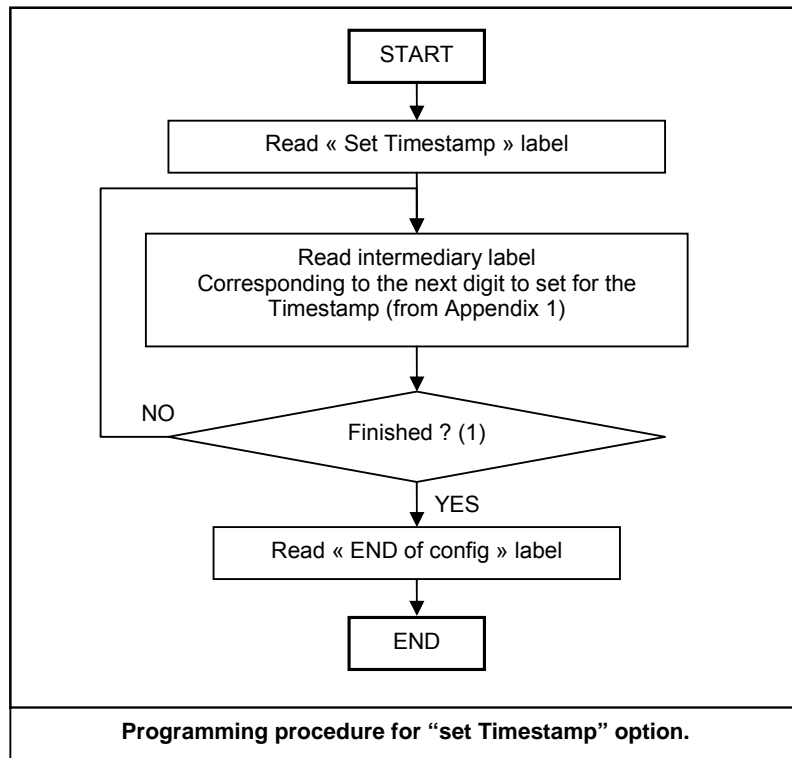
Every barcode sent to the host must be acknowledged by the host (until then, the scanner will transmit it again and again).

This acknowledgment is disabled in default settings. It is strongly recommended to set this protocol acknowledgment on when using the scanner with the BaracodaManager.



2.3.4/ Timestamp Option

Time stamp can be configured (ON/OFF, set new date and new time) by the following configuration barcodes



Noted that the timestamp must fit the specific following format:
 {YY} {MM} {DD} {HH} {MM} {SS}

The setting is made by scanning the 0-9 labels (Appendix 1) as on a calculator; following the timestamp format shown above.

For example: to set the current time at 16th May 2007, 3.25 pm, the user will scan:

- "Set Timestamp" label,
- "0" label,
- "7" label,
- "0" label,
- "5" label,
- "1" label,
- "6" label,
- "1" label,
- "5" label,
- "2" label,
- "5" label,
- "0" label,
- "0" label,
- "end of config" label.

2.4/ Reading Mode

- In trigger mode, pressing the trigger will activate the beam.



2.5/ Operating Mode

Real Time mode (standard mode): barcodes are transmitted in real time to the remote host device/terminal (with optional acknowledgment beep from the host to the scanner).

User can choose if the scanner, when not connected, should read, memorize and later automatically upload the barcodes or shouldn't read the barcodes (no beam).

Batch mode: Barcodes are stored in the scanner even if the reader is connected to a device. In order to upload the data the user will have to read the "discharge" barcode

2.5.1/ Real time mode

Important reminder: if an ACK beep or bufferisation is needed, the scanner must be set in the "no data loss mode" first. (See part 1.2.2.)

REAL TIME mode:

Erases all codes in memory and forces the BaracodaPencil2 in Real time mode.

No other setting is changed.



REAL TIME with ACK beep and bufferisation.

Forces the BaracodaPencil2 in Real Time mode (with data acknowledgement). Erases all codes in memory. The BaracodaPencil2 should have been previously set in the "No data loss mode" ON.



REAL TIME without ACK beep and bufferisation.

Forces the BaracodaPencil2 in Real Time mode (without data acknowledgement). Erases all codes in memory. The BaracodaPencil2 should have been previously set in the "No data loss mode" ON.



2.5.2/ Batch mode

BATCH MODE. Forces the BaracodaPencil2 in Batch mode.
Erases all codes in memory.



When in batch mode, The BaracodaPencil2 will wait the appropriate command in order to start uploading the barcodes: this command can come

- from the Baracoda Manager
- from reading the “discharge” barcode here after

If this barcode is read when the reader is in batch mode and connected, the reader will automatically upload to the host all the data in its memory. If not in batch mode or not connected, the BaracodaPencil2 will ignore this barcode.

→ For CPU firmware versions <1.09, only the following upload barcode is available:



When scanning this barcode, the BaracodaPencil2 will send all barcodes in memory using the Baracoda header, with “no data loss mode” OFF.

→ For CPU firmware versions ≥1.09, this upload barcode is available:



This upload process consists in switching temporarily the BaracodaPencil2 into Real time with “no data loss mode” ON (all the barcodes in memory will be sent using the no data loss protocol). Then the BaracodaPencil2 switches back to batch mode when all the barcodes are properly sent.

2.6/ Buzzer and Led Settings

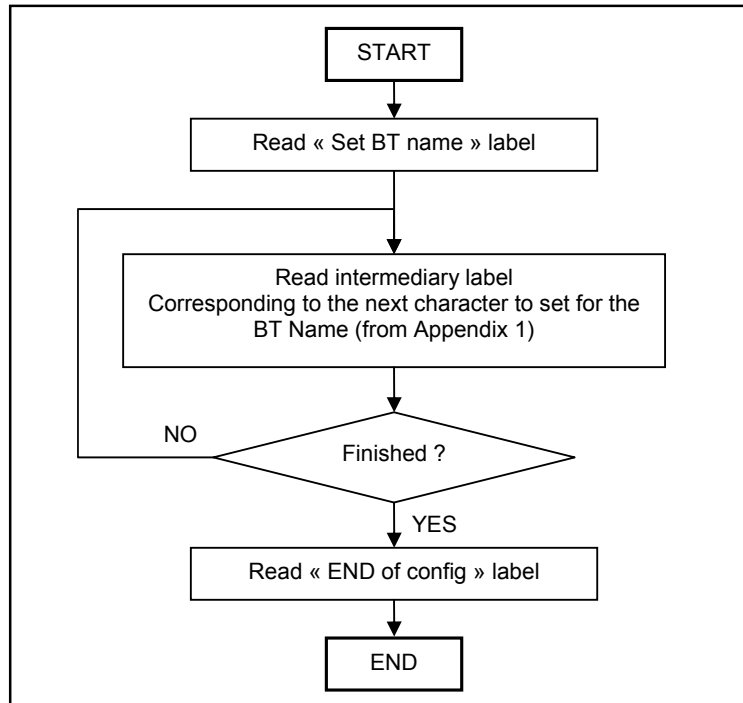
You can use these options to enable or disable the buzzer and / or the Led. You can also invert the led position.



2.7/ Bluetooth commands

2.7.1/ Bluetooth name

You can change the scanner Bluetooth name; name that you see during a search of Bluetooth peripheral



2.7.2/ Sniff settings

The higher the Sniff period, the higher is the latency and the smaller is the power consumption.
Default value is 150ms.



2.7.3/ Power emission settings

You can configure your scanner to work at 20 dBm (default setting) or 10 dBm.
Due to local laws, you may not use 20 dBm in some countries



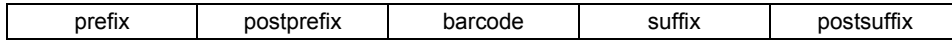
2.7.4/ Security (code PIN) settings

Some BT device will not accept connections with devices that do not have a security code.



2.8/ Prefix and suffix

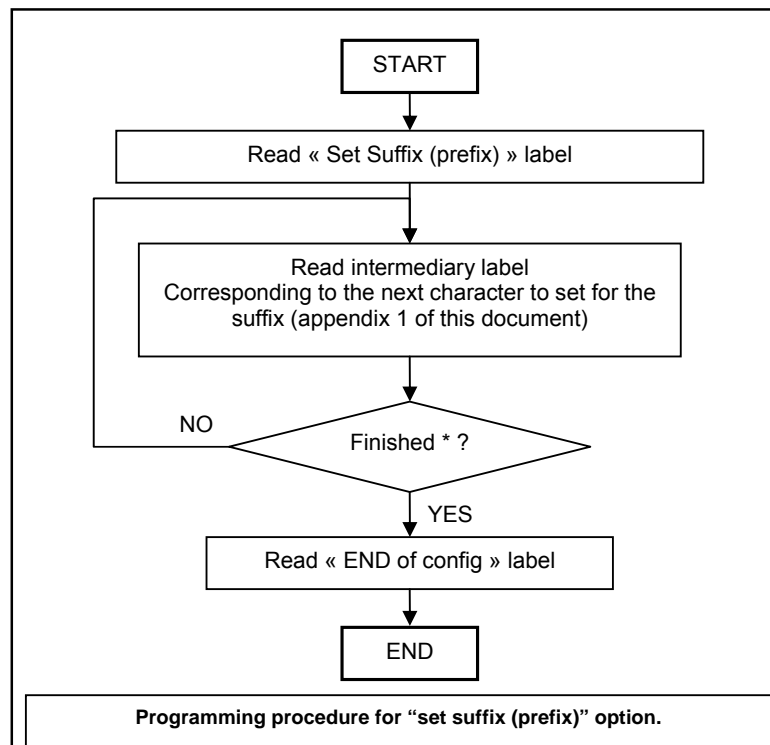
The barcode string can be added a prefix, a postprefix, a suffix and/or a postsuffix. These can come as described below:



2.8.1/ Prefix/suffix

You can add a prefix and/or a suffix (strings of more than 32 characters will not be accepted) to every barcode sent to the host device.

There is no prefix/suffix in default settings.



*= max length of the Suffix (Prefix) is 32 characters

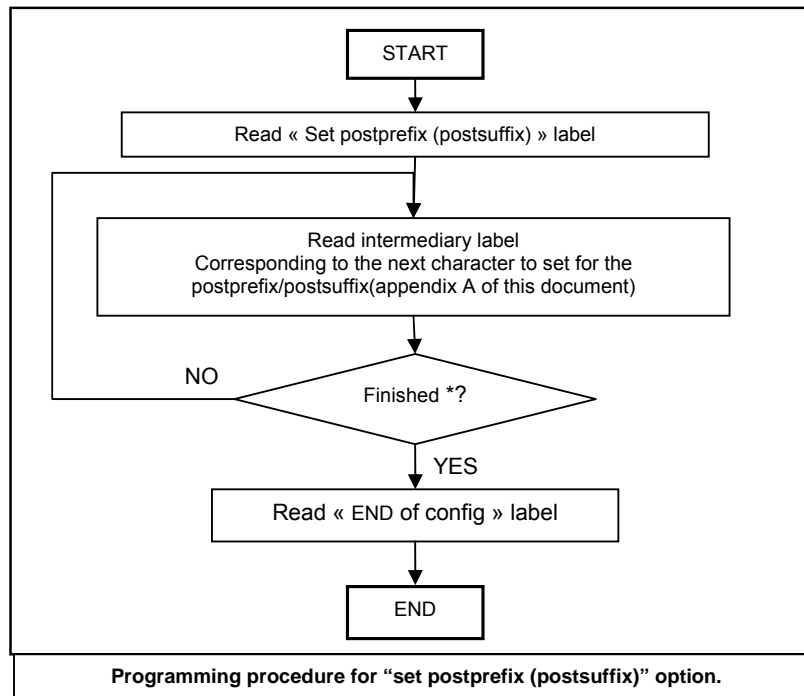


2.8.2/ Postfix/postsuffix

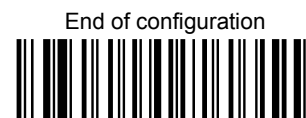
You can add a postfix and/or a postsuffix (strings of more than 32 characters will not be accepted) to every barcode sent to the host device.

(Feature enabled for CPU firmware version ≥ 1.09)

There is no postfix/postsuffix in default settings.



*= max length of the Suffix (Prefix) is 32 characters



3/ Decoder settings

3.1/ Symbology default settings

Sets the defaults decoder settings for all the symbologies



3.2/ Symbology Identifier

AIM Identifier will be transmitted at the beginning of the barcode. More information about the AIM Identifier available in Appendix2

Symbology identifier - AIM - not transmitted (*)



Symbology identifier - AIM - transmitted



3.3/ Disable All Symbologies

Even if all symbologies are disabled, the BaracodaPencil2 will always be able to read the programming barcodes of this document.

Disable all symbologies

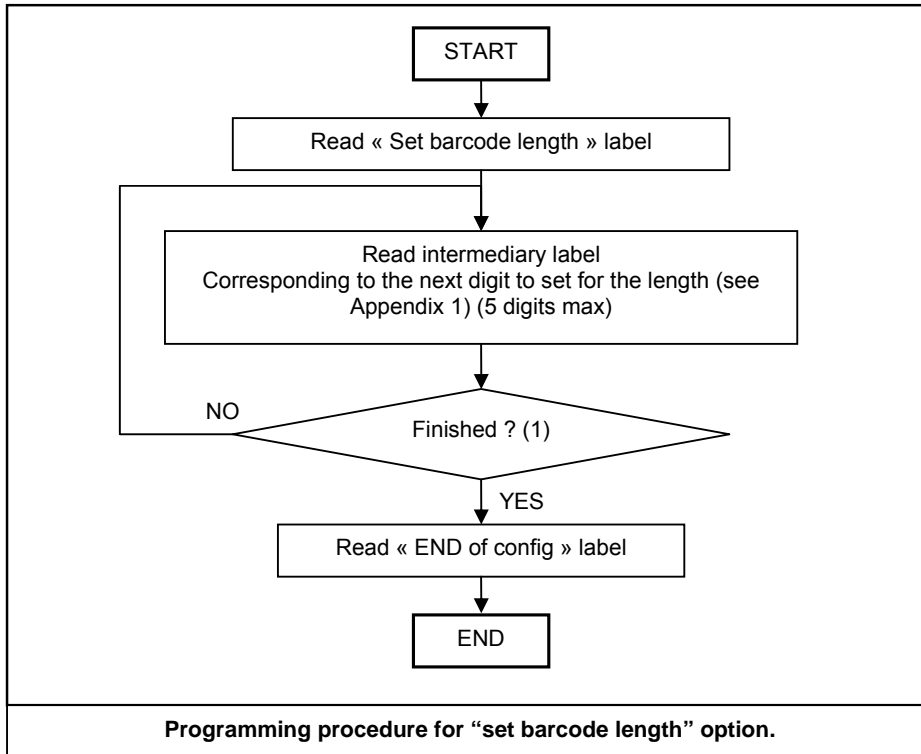


Enable all symbologies



3.4/ Set decoder barcode length

You can set a fixed length for the barcode decoding. The scanner will only decode barcodes of this length.
(Feature enabled for CPU firmware version ≥ 1.09)



3.5/ Codabar settings



Codabar - check digit (AIM recommendation) -
checked and transmitted



Codabar – barcode length Min=6 (*)



Codabar - check digit (AIM recommendation) -
checked but not transmitted



Codabar - barcode length - any length



3.6/ Code 11 Settings

Code 11 - not active (*)



Code 11 - active



Code 11 - check digits - 1 digit (*)



Code 11 - check digits - 2 digits



Code 11 - check digits - checked and transmitted (*)



Code 11 - check digits - checked but not transmitted



Code 11 - barcode length - any length



Code 11 – barcode length – Min = 6 (*)



3.7/ Code 39 settings

Code 39 - active (*)



Code 39 - not active



Code 39 - format - standard 43 characters (*)



Code 39 - format - full ASCII



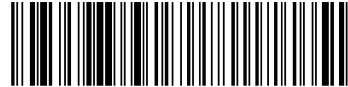
Code 39 - check digit - not used (*)



Code 39 - start/stop - not transmitted (*)



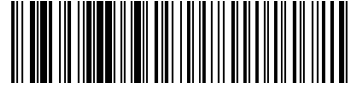
Code 39 - check digit - modulo 43 - checked and transmitted



Code 39 - start/stop - transmitted



Code 39 - check digit - modulo 43 - checked but not transmitted



Code 39 - start/stop - accepted characters - * only (standard Code 39) (*)



Code 39 - barcode length - any length (*)



Code 39 - start/stop - accepted characters - \$ only (Trioptic Code 39)



Code 39 - barcode length - minimum length = 6



Code 39 - start/stop - accepted characters - \$ and * (standard and Trioptic Code 39)



3.8/ Code 93 Settings

Code 93 - not active



Code 93 - barcode length - any length



Code 93 - active (*)

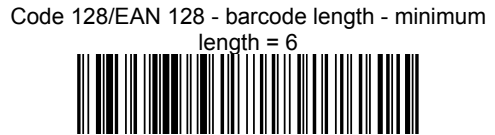


Code 93 - barcode length - minimum length = 6 (*)



3.9/ Code 128 Settings

3.9.1/ General

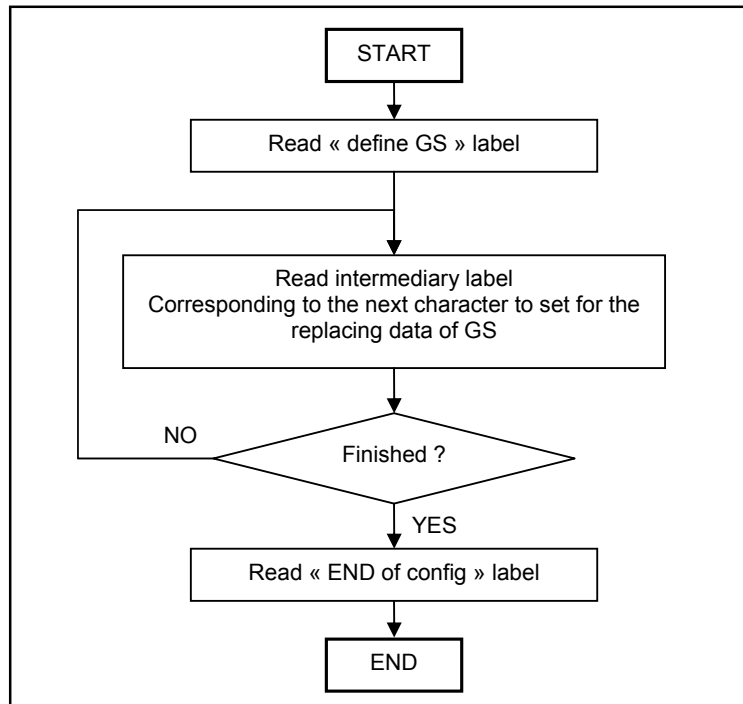


3.9.2/ EAN 128: Group Separator

'FNC1' included in an EAN128 code is transmitted by default as 'GS' (Group Separator – 0x1D).



It is possible to replace that 'GS' data to an other ASCII data.



The common request to replace 'GS' by the | (pipe) can be done through the scan of:

Define | as GS



Even if the "AIM ID transmit" is disabled, it is possible to enable the AIM ID transmission for EAN128.

Enable AIM ID transmission for EAN128



Disable AIM ID transmission for EAN128 (*)



3.10/ Interleaved 2 of 5 Settings

Interleaved 2 of 5 - not active



Interleaved 2 of 5 – active (*)



Interleaved 2 of 5 - check digit - not used (*)



Interleaved 2 of 5 - check digit - mod 10 - checked and transmitted



Interleaved 2 of 5 - check digit - mod 10 - checked but not transmitted



Interleaved 2 of 5 - barcode length - minimum length = 6 (*)



Interleaved 2 of 5 – barcode length- any length



3.11/ MSI Code Settings

MSI Code - not active (*)



MSI Code – active



MSI Code - check digit - mod 10 - checked and transmitted (*)



MSI Code - check digit - mod 10 - checked but not transmitted



MSI Code - check digit - double mod 10 - checked and transmitted



MSI Code - check digit - double mod 10 - checked but not transmitted



MSI Code - barcode length - any length



MSI Code - barcode length - minimum length = 6 (*)



3.12/ Standard 2 of 5 Settings

Standard 2 of 5 - not active



Standard 2 of 5 - active *



Standard 2 of 5 - check digit mod 10 - not used (*)



Standard 2 of 5 - check digit mod 10 - checked and transmitted



Standard 2 of 5 - check digit mod 10 - checked but not transmitted



Standard 2 of 5 - barcode length - any length



Standard 2 of 5 - barcode length - minimum length = 6 (*)



3.13/ UPC/ EAN Settings

UPC / EAN - active (*)



UPC / EAN - not active

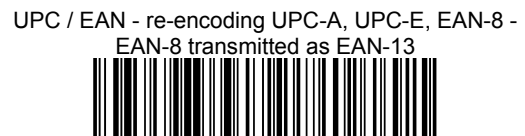
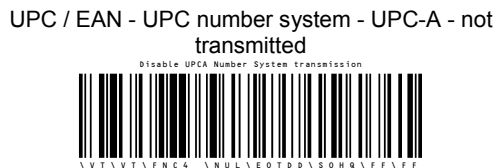
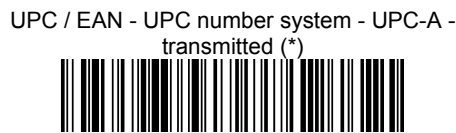
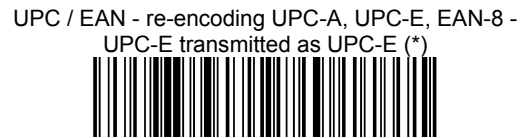
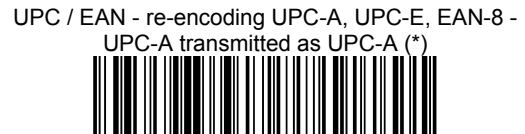
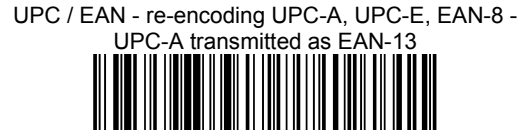
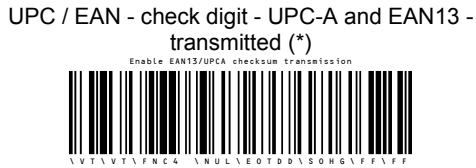
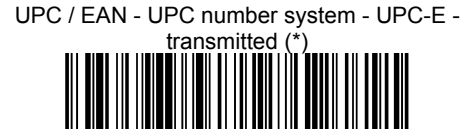


UPC / EAN - UPC-A and EAN 13 deactivated



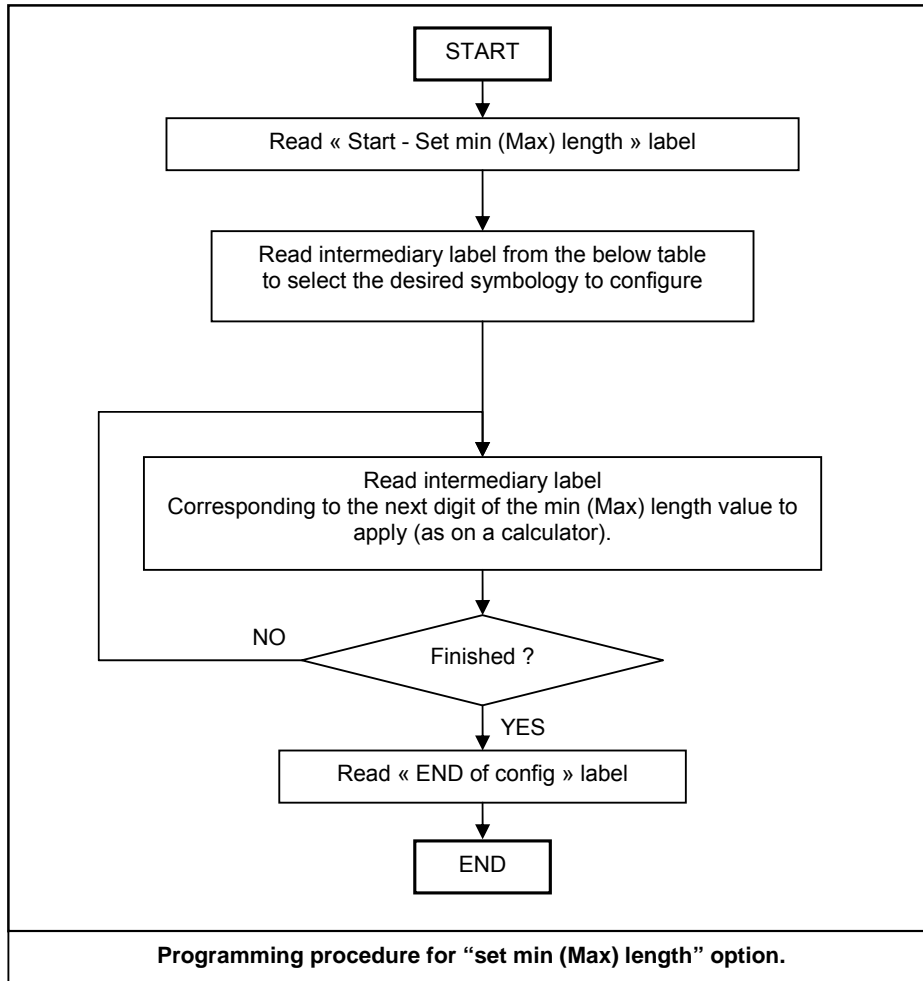
UPC / EAN - UPC-E deactivated

















3.14/ Set min or Max length option

The following is a procedure to follow for every barcodes
















Symbology table














Header	Selected Symbology
	SELECT ALL
	Code 93
	Code 128 / EAN 128
	EAN 13 / UPC A
	Code 39
	Codabar
	Interleaved 2 of 5
	Standard 2 of 5 (industrial 2 of 5)
	Code 11
	MSI
	UPC E
	EAN 8
















APPENDIX 1: ASCII Table (A-Z, a-z, 0-9, punctuation, Control characters)














Capital letters (A-Z) :

Name	Programming label
A	
B	
C	
D	
E	
F	
G	
H	
I	
J	
K	
L	
M	

Name	Programming label
N	
O	
P	
Q	
R	
S	
T	
U	
V	
W	
X	
Y	
Z	

Small letters (a-z) :















Name	Programming label
a	
b	
c	
d	
e	
f	
g	
h	
i	
j	
k	
l	
m	














Name	Programming label
n	
o	
p	
q	
r	
s	
t	
u	
v	
w	
x	
Y	
z	

Punctuation






Space	
!	






"	
#	

\$	
%	
&	
,	
(
)	
*	
+	
,	
-	
.	
/	
:	
;	





<	
=	
>	
?	
@	
[
]	
^	
-	
{	
	
}	
~	



Decimal numbers (0-9) :

Name	Programming label
0	
1	
2	
3	
4	

5	
6	
7	
8	
9	

Control Characters:

Name	Programming label
CR	
EOT	
ETX	
LF	

NUL	
SOH	
STX	
TAB	

APPENDIX 2

The SI prefix is a two or three character string:

] c m where

] : SI indicator

c : Symbology Identification

m : Modifier characters (optional)

Symbology Character

A	Code 39
B	Telepen
C	Code 128
D	Code One
E	EAN/UPC
F	Codabar
G	Code 93
H	Code 11
I	ITF 25
K	Code 16K
L	PDF417

M	MSI code
N	Anker Code
O	Codablock
P	Plessey Code
R	Straight 2 of 5 (two bar start/stop codes)
S	Straight 2 of 5 (three bar start/stop codes)
T	Code 49
X	Other Bar code
Z	Non Barcode data

Modifier Characters

The modifier character is determined by summing the option values of each symbology. If the sum is greater than 9, use A, B, C, D, E, F in the place of 10, 11, 12, 13, 14 and 15.

Code 39 Option Values

0	No check character or Full ASCII
1	Reader has performed mod 43 check
2	Reader has performed mod 43 check and stripped the check character
4	Reader has performed Full ASCII conversion

Telepen Option Values

0	Full ASCII mode
1	Double density numeric mode
2	Double density numeric followed by full ASCII
4	Full ASCII followed by double density numeric

Code 128 Option Values

0	Standard
1	Function code 1 in first character position
2	Function code 2 in second character position
4	Concatenation according to ISBT specification has been performed, and concatenated data follows.