

Device Driver Installation

The reader uses the USB Human Interface Device (HID) driver that comes with Windows. When the unit is the first time plugged into a specific USB port of your computer, Windows coordinates the installation of the driver via plug and play. After this process is completed once, Windows will no longer request this process as long as the unit is plugged into the same USB port. The device driver that Windows will install for this device is the driver used for HID devices and it is part of the Windows operating system. The original Windows CD may be required if the driver files are not found on the hard drive of your computer. Windows 98/2000Me or later versions provides USB HID driver. The reader is with USB keyboard emulation and it works like USB keyboard under Windows operating system with HID driver.

Driver Software Installation From Windows 98/2000Me -

1. Connect Reader into the USB PORT of your computer first.
2. Under **Windows 98/2000Me**, put your original **WINDOWS 98/2000Me DISK** into the CD-ROM disk drive, it will automatically install the interface driver software into your computer by following the steps as below:

Remark: Windows 98/2000Me has provided USB driver software "USB Human Interface Device (HID driver)".

1. This wizard searches for new drivers for USB Device



2. What do you want Windows to do ?



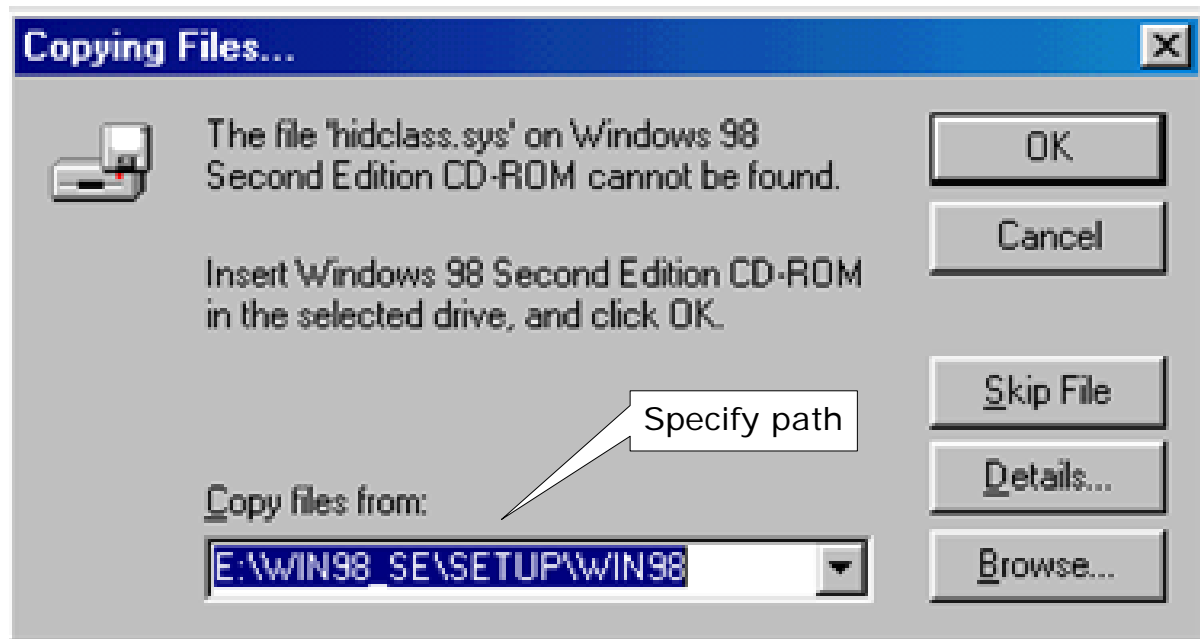
3. Select Searching locations for new driver



4. Windows is now ready to install the best driver

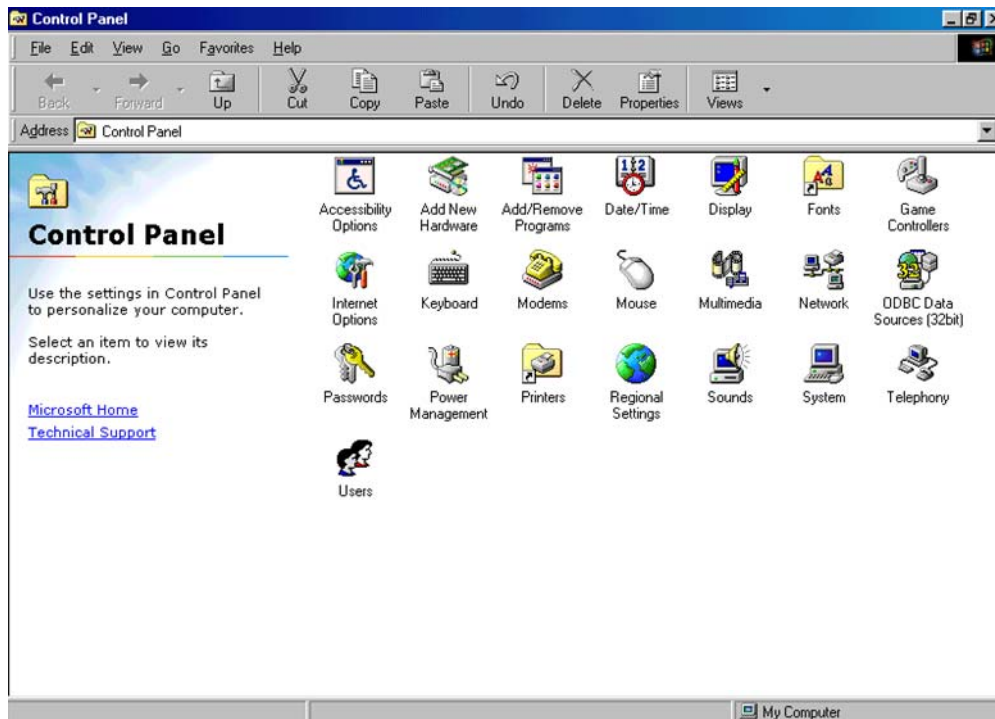


5. Windows is now ready to install the best driver



6. Windows has finished installing the software





7. Make sure if the driver software installation is finished

